



Greenforest Incorporated



Consulting Arborist

MEMORANDUM TO: Lyndsey Fedak, Project Engineer
BLUELINE

REFERENCE: Preliminary Tree Retention Plan, Trees 2 & 25

SITE ADDRESS: 2825 West Mercer Way, Mercer Island WA

DATE: June 19, 2023

PREPARED BY: Favero Greenforest, ISA Certified Arborist # PN -0143A
ISA Tree Risk Assessment Qualified
ASCA Registered Consulting Arborist® #379

This memo is support of the attached Preliminary Tree Retention Plan, and provides minimum protection measures for the retention of trees 2 & 25 at the above referenced site.

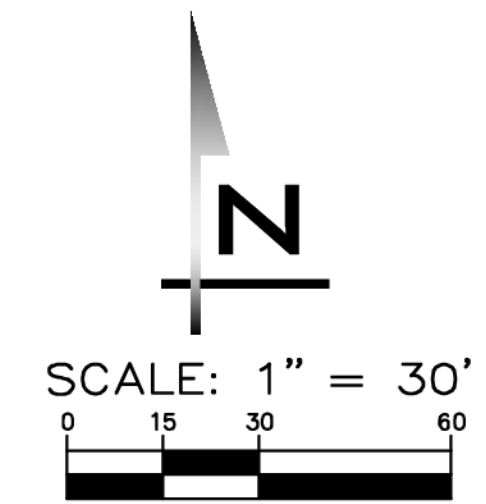
Tree No.	DBH	Common name/Latin name	Dripline Radius
2	27"	Pacific madrone, <i>Arbutus menziesii</i>	16'
25	18,21"	Leyland cypress, <i>Cupressus xLeylandii</i>	16'

I have reviewed Preliminary Tree Retention and Replacement Plan (TR-01, dated 6/19/2023, see attached), and Preliminary Grading Plan (GP-01).

Prior to site clearing or grading,

1. The Tree Protection Zone (TPZ) shall be delineated by the tree protection fencing (TPF) for both retained trees.
2. **TREE 2:** at minimum, TPF shall be placed 20' from center of trunk, or at dripline where individual branches exceed this 20-foot distance.
3. **TREE 25:** place TPF at tree's dripline, except where branches overhang the proposed path south of the tree. Prune low branches as needed to create clearance for proposed path, and place TPF no closer than 12' from center of trunk, as illustrated on TRP.
4. **TPZ shall be off limits** to all work, entry and any soil disturbance, unless authorized by the project arborist and the city arborist.

1/4 NE, SEC 11, TWP 24N, RGE 4E, W.M.



BLUELINE
 25 CENTRAL WAY, SUITE 400,
 HIRVLAND, WA 98033
 P: 425.216.4051 F: 425.216.4052
 WWW.THEBLUELINEGROUP.COM

SCALE:
 AS NOTED
 PROJECT MANAGER:
 BRETT K PUDISTS, PE
 PROJECT ENGINEER:
 LYNDEY FEDAK, PE
 DESIGNER:
 AARON C LANCE
 ISSUE DATE:
 6/19/2023

TREE LEGEND

- EXISTING REGULATED TREE TO BE REMOVED
- EXISTING NON-REGULATED TREE TO BE REMOVED
- EXISTING TREE TO REMAIN
- DRIP LINE

TREE NOTES

- THERE ARE 17 REGULATED TREES, 1 VIABLE AND 16 NON-VIABLE.
- TREE #2 IS REGULATED AND VIABLE AND WILL REMAIN. 100% OF REGULATED VIABLE TREES WILL BE RETAINED AND PROTECTED.
- 16 REGULATED TREES ARE NON-VIABLE. 1 WILL REMAIN AND 15 WILL BE REMOVED. 26 ARE REQUIRED TO BE REPLANTED PER TREE REPLACEMENT TABLE ON SHEET TR-02. 37 TREES ARE PROPOSED TO BE PLANTED.

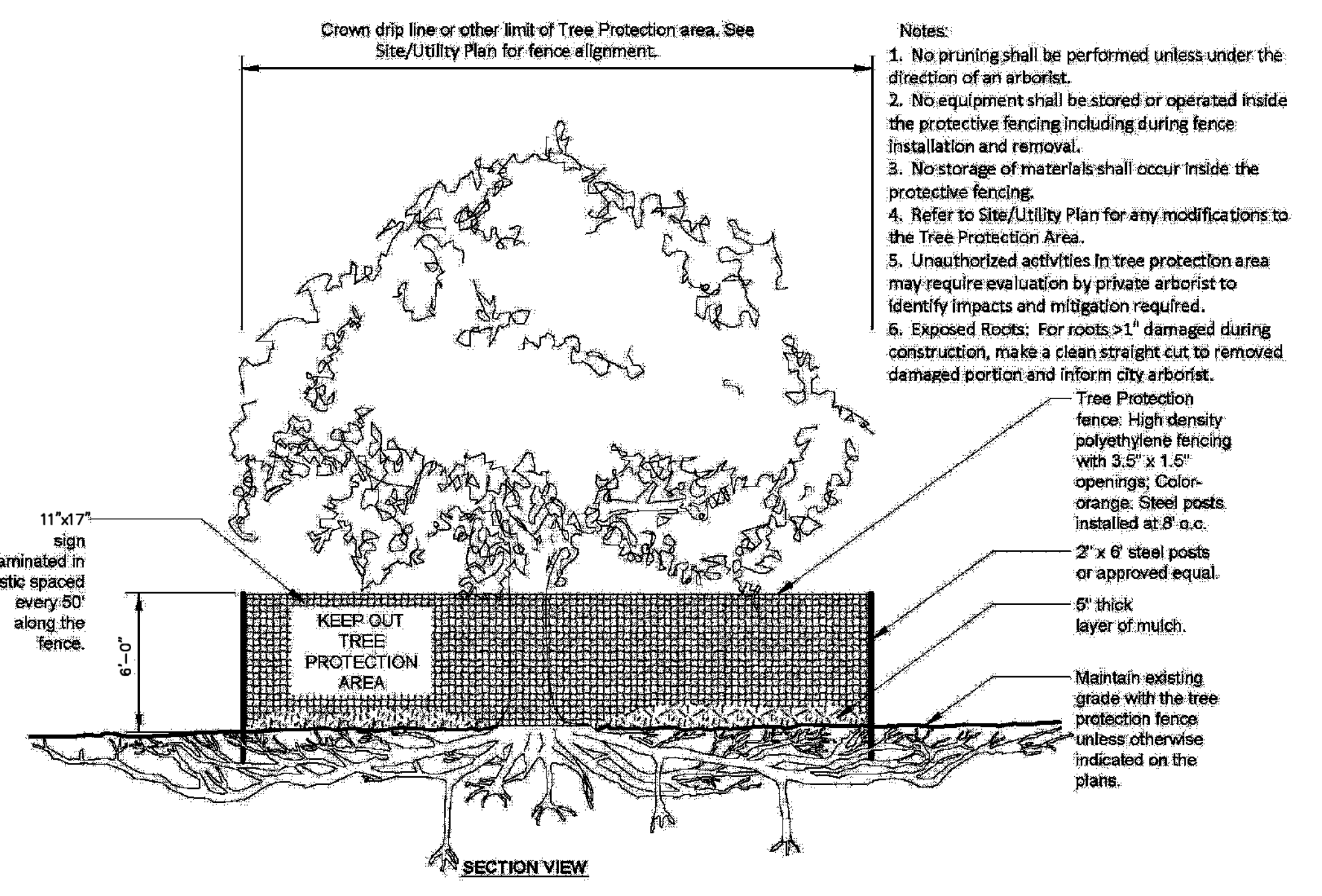
PROPOSED TREE REPLACEMENT

REPLACEMENT LOCATION	NUMBER OF TREES
RIGHT-OF-WAY	11
PARCELS	26
TOTAL	37

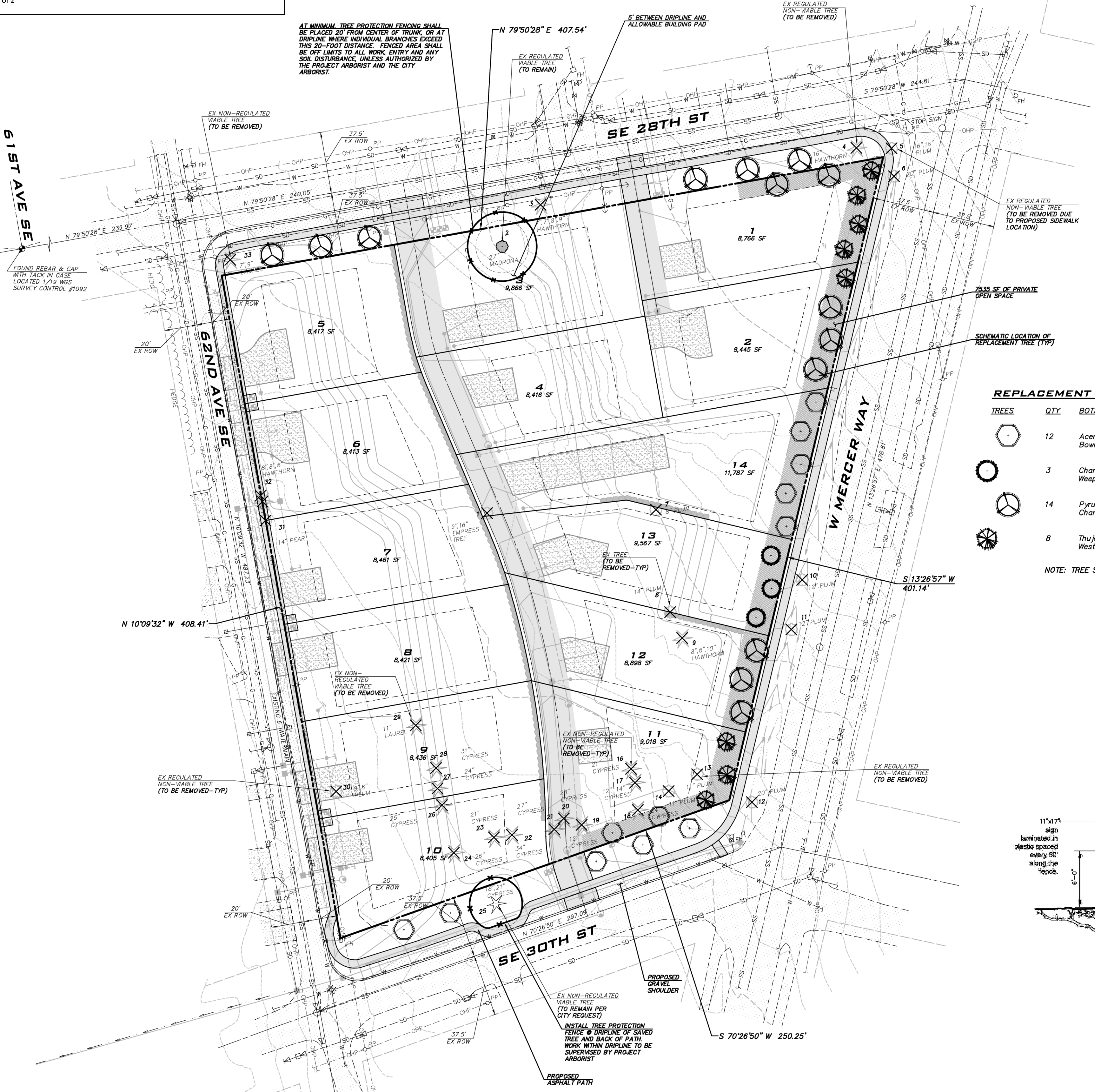
REPLACEMENT TREES

TREES	QTY	BOTANICAL / COMMON NAME	CONT.	SIZE	NATIVE/ADAPTIVE	TREE HT. AT MATURITY
	12	Acer rubrum 'Bowhall' Bowhall Maple	B & B	2" Cal	NORTHWEST ADAPTIVE	UP TO 40'
	3	Chamaecyparis nootkatensis 'Pendula' Weeping Nootka False Cypress	B & B	8' MIN PLANTED HT.	NORTHWEST ADAPTIVE	UP TO 25'
	14	Pyrus calleryana 'Chanticleer' Chanticleer Pear	B & B	2" Cal	NORTHWEST ADAPTIVE	UP TO 25'-35'
	8	Thuja plicata 'Excelsa' Western Red Cedar	B & B	8' MIN PLANTED HT.	NORTHWEST NATIVE	ABOUT 30'

NOTE: TREE SPECIES ARE PRELIMINARY AND MAY BE REVISITED AT FINAL DESIGN



UNDERGROUND UTILITY NOTE
 UNDERGROUND UTILITIES ARE SHOWN IN THE APPROXIMATE LOCATION. THERE IS NO GUARANTEE THAT ALL UTILITY LINES ARE SHOWN, OR THAT THE LOCATION, SIZE AND MATERIAL IS ACCURATE. THE CONTRACTOR SHALL UNCOVER ALL INDICATED PIPING WHERE CROSSING, INTERFERENCES, OR CONNECTIONS OCCUR PRIOR TO TRENCHING OR EXCAVATION FOR ANY PIPE OR STRUCTURES, TO DETERMINE ACTUAL LOCATIONS, SIZE AND MATERIAL. THE CONTRACTOR SHALL MAKE THE APPROPRIATE PROVISION FOR PROTECTION OF SAID FACILITIES. THE CONTRACTOR SHALL NOTIFY ONE CALL AT 8-1-1 (WASHINGTON11.COM) AND ARRANGE FOR FIELD LOCATION OF EXISTING FACILITIES BEFORE CONSTRUCTION.



24:56 Jun 19, 2023 2:05pm User: abrown User: abrown
 Projects\13118\13118 Preliminary\TreePlan\13118TR-01.dwg

REVISIONS

NO	DATE	BY	REASON
1	7/2/21	MKK	REVISED PER CITY COMMENTS
2	10/12/21	MKK	REVISED PER CITY COMMENTS
3	2/16/23	MKK	REVISED PER CITY COMMENTS
4	6/19/23	MKK	REVISED SITE PLAN

PRELIMINARY TREE RETENTION AND REPLACEMENT PLAN
2825 W MERCER WAY
PRELIMINARY PLAN
 PARCEL #2174502425
 WASHINGTON
 CITY OF MERCER ISLAND

6/19/23
 JOB NUMBER:
13-118
 SHEET NAME:
TR-01
 SHT **9** OF **10**